



*jordan fishwick*

26 Valley Drive, SK9 3DW  
Guide Price £589,950



## Valley Drive Handforth SK9 3DW

Guide Price £589,950



Jordan Fishwick are pleased to bring to the market this extended three bedroom detached property located within a highly regarded location in walking distance of Handforth Village. Handforth Village offers a number of local shopping facilities restaurants and a train station. Wilmslow, the larger village, is also a short drive away offering additional amenities with Wilmslow train station offering a direct service to London, Euston and Manchester City Centre. The property is well placed for easy access to the A34 and the M56 for commuters with Manchester Airport being less than 20 minutes away. The area also offers a wide choice of private and local state schools. Internally the property comprises in brief of a spacious entrance hallway with access to a downstairs modern WC. Additionally to the ground floor there are two separate living rooms with the rear living room benefiting from the extension and has a set of sliding patio doors leading to the rear garden. The rear extension spans the entire of the rear of the property to a single storey creating large and spacious ground floor accommodation. There is a spacious dining room with views to the rear garden and access to the well proportioned kitchen. The property could be altered to create a large open plan family space to the rear (subject to building regulations). An internal door leads to an enclosed hallway and then to the garage. Located on the first floor there are three well proportioned bedrooms each benefiting from built-in storage and recesses and a family bathroom. To the rear of the property, the garden is extensive, laid mainly to lawn with mature borders. To the front of the property there is a paved driveway providing off-road parking and a well manicured front lawn.

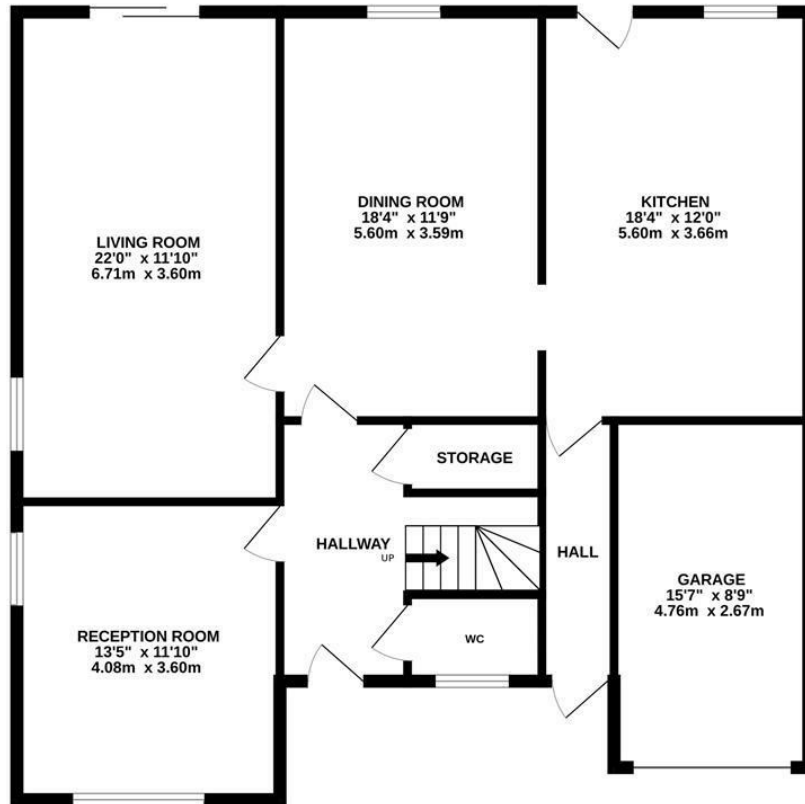


- Extended Detached property
- Three bedrooms
- Extensive rear garden
- Garage and off road parking
- Two separate living rooms
- Large dining room

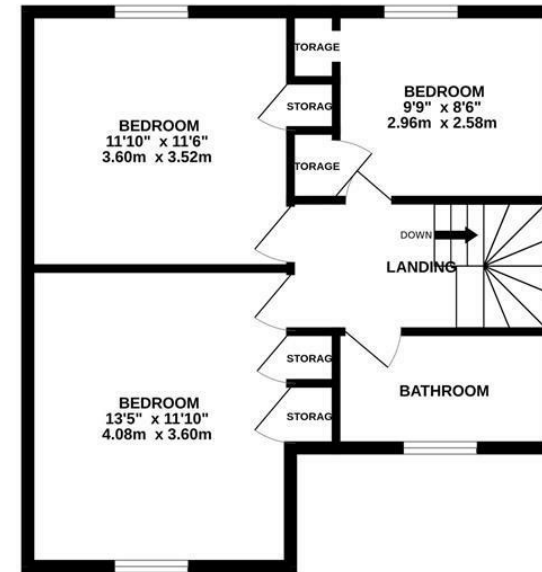


Energy Efficiency Rating		
	Current	Potential
<i>Very energy efficient - lower running costs</i>		
(92 plus) <b>A</b>		
(81-91) <b>B</b>		
(69-80) <b>C</b>		
(55-68) <b>D</b>		
(39-54) <b>E</b>		
(21-38) <b>F</b>		
(1-20) <b>G</b>		
<i>Not energy efficient - higher running costs</i>		
<b>England &amp; Wales</b>	EU Directive 2002/91/EC 	

GROUND FLOOR



1ST FLOOR



Measurements are approximate. Not to scale. Illustrative purposes only  
Made with Metropix ©2025



These particulars are believed to be accurate but they are not guaranteed and do not form a contract. Neither Jordan Fishwick nor the vendor or lessor accept any responsibility in respect of these particulars, which are not intended to be statements or representations of fact and any intending purchaser or lessee must satisfy himself by inspection or otherwise as to the correctness of each of the statements contained in these particulars. Any floorplans on this brochure are for illustrative purposes only and are not necessarily to scale.

Offices at: Chorlton, Didsbury, Disley, Hale, Glossop, Macclesfield, Manchester Deansgate, Manchester Whitworth Street, New Mills, Sale, Wilmslow and Withington

36-38 Alderley Road, Wilmslow SK91JX  
**01625 532000**

wilmslow@jordanfishwick.co.uk  
www.jordanfishwick.co.uk